

**2018 ANNUAL CONFERENCE &
BUSINESS MEETING
OCTOBER 5-7, 2018**



2018 G_{TA} ANNUAL CONFERENCE

**THE WESTIN JEKYLL ISLAND
110 OCEAN WAY
JEKYLL ISLAND, GA 31527**

Join Us For A

Social Reception

SATURDAY@5:30PM

10.6.2018

APPETIZERS & COCKTAILS

One Drink Ticket Included With Registration

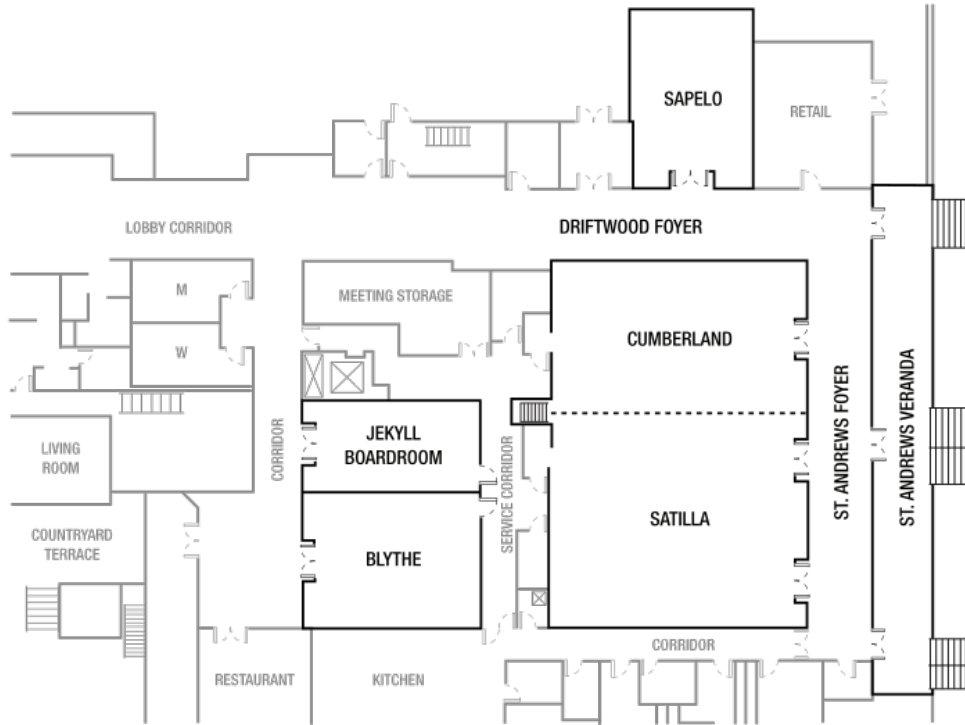
WESTIN JEKYLLE ISLAND COURTYARD

110 Ocean Way . Jekyll Island . GA. 31527

The Westin Jekyll Island

110 Ocean Way
Jekyll Island, Georgia 31527 USA

MEETING ROOMS



A Special Thank You to our 2018 Sponsors!



Transforming the health of our communities, one person at a time.



Peach State Health Plan is a proud sponsor of the Georgia Occupational Therapy Association.

pshp.com
1-866-874-0633

Occupational Therapists: Dedicated to Improving Lives

Northside Hospital Rehabilitation Services and our partner Sovereign Rehabilitation are dedicated to improving the quality of life and abilities of those in need of rehabilitation services. Our talented and highly-trained therapists use innovative and evidence-based practices, serving each patient with the individualized attention and care they need to achieve the best possible outcome. We believe that recovery is a team effort, and work with primary care physicians and your medical specialist, as well as families and caregivers to design wellness plans based on your unique needs and personal goals.

Our goal is to get you back to an active lifestyle where you can do the thing that matter most to you.

We offer a full range of OT services, including:



- Orthopedic & Sports Medicine
- Back, Spine & Pain Therapy
- Hand Therapy & Custom Splints
- Oncology Rehabilitation
- Lymphedema Management
- Women's & Men's Pelvic Health
- Stroke & Neurological Conditions
- Workplace Injuries
- Parkinson's Treatment (BIG & LOUD)
- Aquatic Therapy
- Amputee Rehabilitation

**Northside provides rehabilitation services at 3 hospitals
and 18 outpatient clinics throughout Metro Atlanta**



OCCUPATIONAL THERAPY
AUGUSTA
UNIVERSITY

BUILDING ON *legacy* AND *tradition* TO
DEVELOP THE *future* LEADERS OF OUR PROFESSION

WWW.AUGUSTA.EDU/ALLIEDHEALTH/OT

MCG 1828 AU



essential

therapy services

A multidisciplinary practice founded to serve children and families. Our goal is to deliver quality services for infants and children up to 21 years of age. Services include occupational therapy, physical therapy, and speech-language pathology as well as a variety of supplementary programs provided within a fun, playful atmosphere in our clinics as well as in homes, schools, and other community sites.

Our highly trained, licensed therapists have advanced degrees in their areas of specialty. They are dedicated to ongoing continuing education and the acquisition of advanced pediatric skills. At ETS we focus on the abilities and the optimal potential in each child. Parental input and partnerships with our families and associates are Essential.

WE ARE ESSENTIAL

Serving North
Georgia since 2007

4640 Martin Road
Cumming, GA. 30041

6102 Banks Street
Lula, GA. 30554

O: 678-679-1261
F: 678-250-9010

tblack@essentialts.com
ialvarado@essentialts.com



Like us on Facebook



Brenau University

1878

Occupational Therapy

Brenau University's Post Professional OTD is a 36-credit hour clinical doctorate program. Often we can count up to 6 credits of prior master's level coursework towards the post professional credits. We require a Master's Degree however the Master's degree does not have to be in occupational therapy.

We prepare occupational therapists to become leaders who will advance practice. Students can complete the program in two years while working as coursework is primarily online with a 2-day on ground weekend each semester. We are accepting applications for our next cohort and have rolling admissions.

We have a small student cohort that allows us to offer a more personalized approach. Our Post Professional OTD students develop a capstone project that fits with their professional interests. Our faculty has expertise and experience in a wide range of practice areas. Many of our faculty have authored textbooks (i.e. Willard and Spackman's Occupational Therapy) and published their work. Our faculty are involved in both national and international projects. They provide individual mentoring on the capstone projects.



Brenau University's post-professional Clinical Doctorate in Occupational Therapy (OTD) program prepares students to:

- Be leaders in the profession
- Become advanced, evidence-informed practitioners
- Educate co-workers, families, communities, and students
- Promote, develop and manage clinical research
- Open their own therapy business
- Gain support and funding for their goals

For more information, contact Dr. Louise Dunn, Director of the Brenau Post Professional OTD program via email ldunn@brenau.edu or by voicemail @ 678-707-5009.



MURPHY DEMING
COLLEGE OF
HEALTH SCIENCES

POST-PROFESSIONAL OCCUPATIONAL THERAPY DOCTORATE PROGRAM

Next level. Next direction.

Earn your doctorate through our flexible online program for working adults.



“ Leadership expectations and opportunities for the occupational therapist have never been greater. Our PPOTD Program at MDCHS will not only empower you to meet and exceed these expectations, but also prepare you to seize those new opportunities.

—David Pallister, Program Coordinator

30 credit hours

Complete in 16 months or at your own pace

Online

With two brief campus visits

5% discount

If you enroll for January 2019

Learn more: bit.ly/post-professional-OTD

QUESTIONS?

DAVID PALLISTER, JD, OTR/L

Associate Professor and Coordinator

Post-Professional Occupational Therapy Doctorate Program

540-255-8102 • dpallister@marybaldwin.edu



GOTA Annual Conference & Business Meeting

October 5-7, 2018

Honoring the Past, Treasuring the Present, Shaping the Future

Friday, October 5, 2018		Room
10:30-12:00pm	Board Meeting	Jekyll Board Room
12:00-2:00pm	Registration and Unopposed Vendor Hours	Driftwood Foyer
Session 1 2:00-4:00pm	Fall Prevention: Assessment And Interventions For The Occupational Therapy Professional: <i>Kara Martineau Ross, MPH, OTR/L, CHT</i>	Satilla
	Tackling The Pain Epidemic As An OT Practitioner: <i>Matthew Underwood, PT, DPT, OCS; Robin Underwood, PhD, OT/L</i>	Sapello
	Sensory Motor Assessment: <i>Angela Edney, MSA, OTR/L; Jackie Maynor, OTR/L; Tamera Paulk, OTR/L</i>	Cumberland
	Annual Georgia Consortium For Fieldwork Education Meeting: <i>Charles Shadle, OTD, OTR/L</i>	Blythe
Session 2 4:15-6:15pm	Orthotics Workshop: “The Thumb Spica Orthotic”: <i>Rob McClellan, OTR/L, CHT; Missy Thurlow, MBA, OTR/L, CHT; Stephanie Kiel, OTR/L, CHT; Graham Reeves, MS, OTR/L; Corey McIntyre, MS, OTR/L</i>	Satilla
	Collaborative Approach To Activities And Wellness For Individuals With Dementia: <i>Tamera Paulk OTR/L; Angela Edney, MSA, OTR/L; Jackie Maynor, OTR/L</i>	Sapelo
	The Hidden Cost Of Caring And Caregiving: Compassion Fatigue And Burnout In Healthcare Professionals And Informal Caregivers: <i>Erin Brennan Povse, MS, OTR/L</i>	Cumberland
	Education For The Fieldwork Educator: <i>Celeste Alexander, MS, OTR/L; Marsena Devoto, MSOT, OTD, OTR/L; Charles Shadle, OTD, OTR/L</i>	Blythe
Saturday, October 6, 2018		Room
7:45-8:00am	Opening Remarks: GOTA Conference Committee Members	Satilla & Cumberland
Session 3 8:00-9:00am	Keynote Address: Sparking Change: <i>Amy Lamb, OTD, OTR/L, FAOTA</i> <i>AOTA President</i>	
Session 4 9:15- 10:15am	Where Does Your Older Adult Client Want To Be In 10 Years? Presenting The Upstream Living Program: <i>Nancy L. Fowler, OTD, OTR/L</i>	Sapelo

	Shaping The Future Of Occupational Therapists By Promoting The Use Of Professional Reasoning Skills Through International Fieldwork: <i>Elizabeth Burch, OTD, OTR/L; M. Irma Alvarado, PhD, OT/L FAOTA</i>	Cumberland
	Pediatric Pharmacology and Implications for Occupational Therapy: <i>Adrienne Gurley, MS, OTR/L, Marcus Gurley, JR., PharmD, RPH</i>	Satilla
	OT and Health Literacy: Current Practices and Recommended Actions: <i>Kay Graham, PhD, OTR/L; Christopher Galati, MSOT, OTR/L</i>	Blythe
10:30-11:30am	Unopposed Vendor Time	Driftwood Foyer
Session 5 11:30-12:30pm	Business Meeting and Lunch	Satilla & Cumberland
Session 6 12:45-1:45pm	Poster Presentations	
Session 7 2:00-3:00pm	The Refugee Crisis And Georgia: How Does Occupational Therapy Fit In?: <i>Karen McWater, OTS; Payton Pritchard, OTS; Christine Sherwood, OTS; Wei Wang, OTS</i>	Cumberland
	Yoga As An Intervention For Prevention And Wellness In Occupational Therapy: <i>Elena Wheeler, COTA/L, RYT 500, NCTM/L</i>	Sapelo
	Neuroprotective Practice Standards In The Neonatal Intensive Care Unit (NICU) And What That Means For Practice In Pediatrics: <i>Jenene W. Craig, PhD, MBA, OTR/L, CNT, NIDCAP; Kristen V. Lark OTR/L</i>	Satilla
Session 8 3:15-4:15pm	Update On Current AOTA Strategic Initiatives For Georgia OT Practitioners: <i>Audrey Gargiullo, MS, OTR/L; Erin Brennan Povse, MS, OTR/L</i>	Cumberland
	Examining The Phenomenon Of Failure To Fail In Fieldwork Education: <i>Charles Shadle, OTD, OTR/L</i>	Blythe
	GOTA Research Committee: Shaping The Future Of Research In Georgia Together: <i>Teal Benevides, PhD, MS, OTR/L; Kristen Lueck, MOT, OTR/L, BCPR; Tamara Mills, PhD, OTR/L, ATP; Jenene Craig PhD, MBA, OTR/L, CNT, NIDCAP</i>	Sapelo
	Use Of The Alert Program® With Adults With DD/ID: <i>Benjamin Keeling, OTS ; Jennifer Allison, OTD, OTR/L; Mary Shotwell, PhD, OT/L, FAOTA</i>	Satilla
5:30-7:30pm Social Networking Reception: Hosted in the courtyard at the Westin		
Sunday, October 7, 2018		Room
Session 9 7:00- 8:00am	Occupational Therapy Self-Care Through Yoga And Tai Chi*: <i>Elena Wheeler, COTA/L, RYT 500, NCTM/L</i>	Beach
Session 10 8:30-9:30am	Legislative And Regulatory Issues: <i>Aileen Deogracias, OTR/L; Tom Bauer, Lobbyist</i>	Satilla & Cumberland

Session 11 9:45-10:45am	Occupational Therapy And Pelvic Floor Rehabilitation: <i>Kristen Allen, OTR/L</i>	Cumberland
	Georgia OT Licensure Update: <i>Rob McClellan, OTR/L, CHT;</i> <i>Mary Shotwell, PhD, OT/L, FAOTA</i>	Satilla
	Improving Self-Determination: A Strengths-Based Transition Intervention For A Youth With ASD: <i>Teal Benevides, PhD, OTR/L</i>	Blythe
	Comprehensive Behavioral Intervention For Tics: An Emerging Practice Area For Occupational Therapy: <i>Debi Hinerfeld, PhD, OTR/L, FAOTA</i>	Sapelo
Session 12 11:00-12:00pm	Skilled Maintenance: Regulation And Patient Advocacy: <i>Jackie Maynor, OTR/L; Tamera Paulk, OTR/L; Angela Edney, MSA, OTR/L</i>	Cumberland
	The Emerging Practice Niche: Exploring Your Entrepreneurial Itch In Occupational Therapy: <i>Kay Richardson, OTA/L, C.E.A.S</i>	Blythe
	Occupational Therapy & Bathroom Transfer Technologies. What Is Our Role, And Where Should We Go? <i>Susan Lee, MS, OTR/L; Evan Fowler, MID/S; Jon Sanford, M.Arch</i>	Satilla
	A Best Practice Model In A Hospital System-Development, Practice, And Implementation Using An Oncology Framework: <i>Cheri Romero, OT/L</i>	Sapelo
14 Total Contact Hours Available		

Saturday, October 6th, 2018
Keynote: 8:00-9:00am

Sparking Change



About the Speaker:

Dr. Lamb is President of the American Occupational Therapy Association. She has previously served the American Occupational Therapy Association on its Board of Directors as its President-Elect from 2015-2016 and Vice President from 2012-2015. Dr. Lamb is an Associate Professor of Occupational Therapy at Eastern Michigan University, and owner of AJLamb Consulting. She is a past chair of the American Occupational Therapy Political Action Committee (AOTPAC) from 2006-2012. She brings with her the valuable combination of clinical practice as a licensed occupational therapist combined together with health care policy experience at the state and federal levels. Dr. Lamb's expertise includes health policy, prevention and wellness, and occupational therapy as a career.

Dr. Lamb received both her Bachelor of Science in Occupational Therapy and her post professional Doctor of Occupational Therapy from Creighton University in Omaha, Nebraska. Her policy experience began in the Minnesota House of Representatives working with the Health Policy committee. From there she went on to be employed by the Nebraska Occupational Therapy Association as their registered lobbyist from 2000-2008.

Dr. Lamb's clinical expertise spans from private practice, school-based pediatrics, acute care, and older adults. Prior to her current position she was an Outpatient Director with Brookdale Senior Living managing the outpatient therapy clinics, home health rehabilitation services and hospice services in assisted living and independent living communities in the Denver, Colorado area.

In 2012, Dr. Lamb was selected to join the American Occupational Therapy Association Roster of Fellows. In 2011, she received the AOTA Lindy Boggs advocacy award for her leadership in advocacy and political action in the profession of occupational therapy. Dr. Lamb was the 2014 recipient of the Eastern Michigan University College of Health and Human Services Everett L. Marshall Fellow Award for Excellence in Service.

In her volunteer leadership positions, Dr. Lamb is part of the team that helps occupational therapy professionals understand AOTA's policy and quality agendas. She is integral in articulating the distinct value of occupational therapy in traditional and emerging areas of practice including primary health care and wellness initiatives. She speaks regularly to groups on health policy issues impacting practice emphasizing quality services for beneficiaries and provides participants with practical ways to get involved in the process and make their voices heard. Dr. Lamb works to help practitioners, students, educators and researchers identify their role as influencers of change in their daily work as we demonstrate the value of occupational therapy to enhancing the efficiency of systems we work within, enhance the quality of care clients receive, and be a cost-effective solution to meet the dynamic needs of the people, populations and communities we serve.

Dr. Lamb currently resides outside of Dexter, Michigan with her husband Nathan and their two children Gabby (16) and Josh (14).

2018 GOTA Annual Conference & Business Meeting

Honoring the Past, Treasuring the Present, Shaping the Future

October 5-7, 2018

Session Information

Friday, October 5, 2018

Session 1: 2:00-4:00 pm

Fall Prevention: Assessment And Interventions For The Occupational Therapy Professional

Kara Martineau Ross, MPH, OTR/L, CHT

Upper extremity fractures in older adults are commonly seen in hand and upper extremity rehabilitation. However, certified hand therapists and occupational therapy generalists may not be prepared to evaluate and educate their clients in evidence-based fall prevention strategies. The course will focus on instructing therapists to educate community-dwelling older adults who have sustained an upper extremity fracture due to a fall, or those clients seen in the outpatient setting who may be at risk for falls. This multifactorial and evidence based course will include lecture as well as lab, providing the course participants active learning to practice essential assessment and intervention strategies.

Tackling The Pain Epidemic As An OT Practitioner

Matthew Underwood, PT, DPT, OCS; Robin Underwood, PhD, OT/L

In the midst of a growing opioid and chronic or persistent pain epidemic, it is imperative that OT practitioners have the foundational knowledge and skills necessary to combat these issues in a nonpharmacological way. In addition, OT practitioners in nearly every setting work with patients who experience pain. In order to meet these challenges, this presentation will provide OT practitioners with a background in the current science behind the best methods for managing persistent pain while providing an overview of the most effective clinical interventions that promote occupational performance. The hope is that OT practitioners can become integral team members to appropriately manage the multi-factorial nature of persistent pain.

Sensory Motor Assessment

Angela Edney, MSA, OTR/L; Jackie Maynor, OTR/L; Tamera Paulk, OTR/L

The Sensory Motor Assessment, a new tool to assess functional cognition in persons with advanced dementia and other cognitive disorders, can be utilized to determine the specific cognitive level and functional abilities of patients with severe cognitive limitations. The tool is based on the cognitive disabilities model and can be used to develop an optimal person-centered treatment program. This standardized approach includes sample treatment goals, strategies, and documentation. This session will provide psychometric data obtained through initial

development research. Case studies and clinical outcomes will be shared. Occupational Therapy's rich history includes developing activities programs. This tool can be used to develop an activity based program for patients with late dementia.

Annual Georgia Consortium For Fieldwork Education Meeting

Charles Shadle, OTD, OTR/L

This meeting is for academic fieldwork coordinators and faculty from consortium member institutions. Current issues impacting fieldwork placements in the state of Georgia and abroad will be identified and discussed with the intent of problem solving solutions.

Session 2: 4:15-6:15 pm

Orthotics Workshop: "The Thumb Spica Orthotic"

Rob McClellan, OTR/L, CHT; Missy Thurlow, MBA, OTR/L, CHT; Stephanie Kiel, OTR/L, CHT; Graham Reeves, MS, OTR/L; Corey McIntyre, MS, OTR/L

In the Orthotics Fabrication Lab, participants will have the opportunity to identify and discuss the diagnoses that are fitting for the Thumb Spica Orthosis. Emphasis of this hands on lab will be on the design and fabrication techniques.

Collaborative Approach To Activities And Wellness For Individuals With Dementia

Tamera Paulk OTR/L; Angela Edney, MSA, OTR/L; Jackie Maynor, OTR/L

Persons living with dementia have strengths and abilities that exist regardless of their level or stage; however, it is important for programming to stimulate cognition to promote the person's best ability to function. This presentation will provide instruction for how caregivers and other team members can facilitate wellness, meaningful engagement, and purposeful occupation with persons who have various levels of cognitive impairment.

The Hidden Cost Of Caring And Caregiving: Compassion Fatigue And Burnout In Healthcare Professionals And Informal Caregivers

Erin Brennan Povse, MS, OTR/L

The content to be covered in this lecture will include defining the terms compassion fatigue, compassion satisfaction, burnout, and caregiver burden in both healthcare professionals and informal caregivers. The use of standardized assessments will be discussed and practiced in this lecture. The overlap and link of compassion fatigue in the informal caregiver and the rising incidence of dementia will be explained. Various self-management and self-care strategies will be explored to improve quality of life and overall work/life balance.

Education For The Fieldwork Educator

Celeste Alexander, MS, OTR/L; Marsena Devoto, MSOT, OTD, OTR/L; Charles Shadle, OTD, OTR/L

Attendees to this session will be educated on the fieldwork placement process, the legal and ethical implications of being a fieldwork educator, and the rights, roles, and responsibilities of the student in fieldwork education. The impact of the Family Educational Rights and Privacy Act and the Americans with Disabilities Act on fieldwork education will be discussed along with the role the ACOTE standards has in fieldwork education.

Saturday, October 6, 2018

7:45-8:00 am

Opening Remarks

Conference Committee

Session 3: 8:00-9:00 am

Keynote Address: Sparkling Change

Amy Lamb, OTD, OTR/L, FAOTA, AOTA President

See page 4 for details

Session 4: 9:15-10:15 am

Where Does Your Older Adult Client Want To Be In 10 Years? Presenting The Upstream Living Program

Nancy L. Fowler, OTD, OTR/L

The Upstream Living program is an occupational therapy wellness program modeled after Lifestyle Redesign and the British Lifestyle Matters programs and designed to promote the health and well-being of community-dwelling older adults. The program was piloted in Gainesville, GA with a culturally diverse group of older adult tenants living independently in their apartments. Upstream Living is based on the premise that older adults are able to make positive changes to their lifestyle for an increased quality of life, resulting in continued functional independence and longer aging in place. This presentation will include a walk-thru of a session module and will highlight concepts which you can use with your older adult clients.

Shaping The Future Of Occupational Therapists By Promoting The Use Of Professional Reasoning Skills Through International Fieldwork

Elizabeth Burch, OTD, OTR/L; M. Irma Alvarado, PhD, OT/L FAOTA

A way to increase global connectivity and diversity is through International Occupational Therapy Fieldwork opportunities, which not only have a positive influence on the student, but also positively influences the community partnership (Clark, 2013). Level II Fieldwork allows students to apply theory and techniques in an in-depth learning experience which focuses on the

application of evidence-based, purposeful and meaningful occupations (AOTA, 2015) and development of students' professional reasoning skills. The Brenau University International Fieldwork Manual for Clinical Instructors will be presented. This manual includes examples, weekly activities and guidelines to promote the growth of professional reasoning skills.

Pediatric Pharmacology and Implications for Occupational Therapy

Adrienne Gurley, MS, OTR/L,; Marcus Gurley, JR., PharmD, RPH

The Pediatric Pharmacology and Implications for Occupational Therapy course will be an interactive course including: power point presentation, role play, and team work projects on case studies. Attendees will be provided with hands-on opportunities to apply learned techniques with peers, and presenting pharmacist.

OT and Health Literacy: Current Practices and Recommended Actions

Kay Graham, PhD, OTR/L; Christopher Galati, MSOT, OTR/L

Healthy People 2030 recently updated its foundational principles to specifically include health literacy as necessary to achieve health and well-being (Healthy People 2030, n.d.). The presenters will review health literacy concepts and identify those populations considered most vulnerable. Health Literacy Universal Precautions will be discussed in relation to OT practice settings. Recent research regarding current OT knowledge and practice regarding health literacy will be reviewed. At the end of the presentation, participants will be given the chance to discuss methods that they could apply strategies to meet and promote health literacy in their practice settings.

Session 5: 11:30 am -12:30 pm

GOTA Business Meeting; Lunch Included

Session 6: 12:45-1:45 pm

Poster Presentations

- Determining The Psychometric Properties Of A Bank Of Items Related To An Individual's Psychological Condition
Lauren Almanza, OTS; Robert Lowery, OTS; Rachel Pace, OTS; Sydney Sweinhart, OTS; and Leigh Lehman, OTR/L, PhD
- Predictors Of Social Change Leadership Values For Entry Level Occupational Therapy And Occupational Therapy Assistant Students
Debi Hinerfeld, PhD, OTR/L, FAOTA
- The ShOP Study: Everyday Cognition
Jena Clinch OTS, Alysse Edwards OTS, Kelita Flatman OTS, Libby Kellar OTS, Olivia Spillane OTS, and Leigh Lehman, OTR/L, PhD

- Identifying Key Quality Of Life (QOL) Components Within Persons With Amyotrophic Lateral Sclerosis And Their Caregivers.

*Chloe Barrett, MHS, OTR/L; David Bishop, MHS, OTR/L;
April Conway, MHS, OTR/L; Kara Parmer, MHS, OTR/L;
and Stephanie Johnson, MHS, OTR/L*

- The Impact Of Supportive Services On The Quality Of Life And Sense Of Well-Being In Community Living Older Adults

Amanda Pitts, OTS; Hayat Akmel, OTS; and Jonathan Cam, OTS

- Association Between Home Layout And Mobility In Community-Dwelling Older Adults

*Veronica Betancourt OTS; Wei Wang OTS; Eric Minter OTS;
Dr. Kinsuk K. Maitra, PhD, OTR/L; Dr. Sonit Bafna, PhD;
and Dr. Yoonjeong Lim, PhD, OTR/L*

- The Effects Of Yoga On Pain, Sleep, Mood, And Executive Function In Individuals With Traumatic Brain Injury

*Karen McWaters OTS; Karlie Moore OTS; Paige Muma OTS;
Payton Pritchard OTS; Christine Sherwood OTS; Hillary Woodall OTS;
and Pey-Shan Wen Ph.D., OTR/L*

- Hidalgo Model of Mental Healthcare

*Amy Todd OTR/L, CHT; Irma Alvarado PhD, OT/L, FAOTA;
Andrea Rodriguez Leonard OTR/L; and Lauren Weaver OTR/L*

- Racial And Ethnic Disparities In Healthcare From Conception To Birth

Schonie Hamilton, OTS

Session 7: 2:00-3:00 pm

The Refugee Crisis And Georgia: How Does Occupational Therapy Fit In?

Karen McWater, OTS; Payton Pritchard, OTS; Christine Sherwood, OTS; Wei Wang, OTS

Clarkston, Georgia, has been called the Ellis Island of the South. Over 1,500 new refugees settle in the Atlanta area every year. These families and their children are at heightened risk for occupational deprivation and mental health disorders while facing a unique set of challenges during integration into their new home country. Occupational therapy has a unique opportunity to impact refugee integration and complement existing services to provide successful occupational engagement for these new citizens.

Yoga As An Intervention For Prevention And Wellness In Occupational Therapy

Elena Wheeler, COTAL, RYT 500, NCTM/L

Few disciplines speak as eloquently to Honoring the Past, Treasuring the Present, Shaping the Future as the practice of yoga. With its roots in ancient Indian traditions, yoga has been preserving the health of practitioners for centuries. It is currently enjoyed by people of all ages, backgrounds and body types worldwide, providing therapeutic tools to help them lead independent and satisfying lives. This presentation will help OT practitioners to integrate yoga into their practice by understanding the origins and principals of yoga as well as the therapeutic effects of specific poses combined with breath control. Participants will be given a chance to observe poses and practice them during the presentation. Electronic handouts will reinforce learning.

Neuroprotective Practice Standards In The Neonatal Intensive Care Unit (NICU) And What That Means For Practice In Pediatrics

Jenene W. Craig, PhD, MBA, OTR/L, CNT, NIDCAP; Kristen V. Lark OTR/L

This session will cover topics related to occupational therapy work in the neonatal intensive care unit with specific discussion around neuroprotection, neurodevelopment, assessment, intervention, and outcomes. Discussion related to the experience infants and families have in the NICU and how that impacts our work as pediatric therapists (post-NICU).

Session 8: 3:15-4:15 pm

Update On Current AOTA Strategic Initiatives For Georgia OT Practitioners

Audrey Gargiullo, MS, OTR/L; Erin Brennan Povse, MS, OTR/L

The content that will be covered in this lecture will be an overview and discussion of the strategic priorities and initiatives of AOTA Vision 2025 and the Choosing Wisely initiative.

Examining The Phenomenon Of Failure To Fail In Fieldwork Education

Charles Shadle, OTD, OTR/L

Should students fail? Attendees to this event will be educated on the implications of allowing subpar student performance to continue in fieldwork education. Potential ramifications of failing to fail will be discussed in detail with an emphasis on strategies to address subpar performance and promote successful matriculation or prohibit subsequent progression through occupational therapy education.

GOTA Research Committee: Shaping The Future Of Research In Georgia Together

Teal Benevides, PhD, MS, OTR/L; Kristen Lueck, MOT, OTR/L, BCPR; Tamara Mills, PhD, OTR/L, ATP; Jenene Craig PhD, MBA, OTR/L, CNT, NIDCAP

This roundtable discussion aims to educate attendees regarding the purpose and progress of the GOTA Research Committee and to discuss current methods clinicians prefer for knowledge acquisition and translation. The Research Committee exists to address the GOTA practitioners and stakeholders needs for effective solutions. AOTA defines effective occupational therapy as therapy that is evidence based, client centered, and cost effective (AOTA, 2017). The GOTA

Research Committee identified three primary goals for the 2017-2018 cycle: a) Improve the research capacity of Georgia OT providers in order to maximize participation of clients; b) Ensure that OT research in Georgia meets the prioritized needs of stakeholders and consumers of OT services in Georgia; and c) Identify and implement methods to improve the use of research and evidence-based practices by OT practitioners in Georgia.

Use Of The Alert Program® With Adults With DD/ID

Jennifer Allison, OTD, OTR/L; Mary Shotwell, PhD, OT/L, FAOTA; Benjamin Keeling, OTS

This interactive session will review current interventions (including sensory-based interventions) with DD/ID. We will also review the Alert program® and its application to this population. Participants will leave the presentation with understanding of The Alert protocol® as applied to Adults with DD/ID.

Sunday, October 7, 2018

Session 9: 7:00-8:00 am

Occupational Therapy Self-Care Through Yoga And Tai Chi *on beach*

Elena Wheeler, COTAL, RYT 500, NCTM/L

Both tai chi and yoga speak eloquently to Honoring the Past, Treasuring the Present, Shaping the Future. With roots in ancient Chinese and Indian traditions, they have been preserving the health of practitioners for centuries. They are currently enjoyed by people of all ages, backgrounds and body types worldwide, providing therapeutic tools to help them lead independent and satisfying lives. This playful beach session will help OT practitioners to integrate tai chi and yoga into their self-care by demonstrating and practicing simple tai chi movement and yoga poses in a beautiful, relaxing environment. Participants will learn the importance of correct body alignment and anatomical position for muscle and joint strength.

Session 10: 8:00-9:30 am

Legislative And Regulatory Issues

Aileen Deogracias, OTR/L; Tom Bauer, Lobbyist

Session 11: 9:45-10:45 am

Occupational Therapy And Pelvic Floor Rehabilitation

Kristen Allen, OTR/L

The pelvic floor and pelvic girdle are comprised of muscular, ligamentous and bony structures that assist in providing core and pelvic stability; thus promoting mobility of the upper and lower extremities for functional movement. Dysfunction involving these anatomical structures can occur in males and females throughout their lifespan (Herman & Wallace, 2018). Disorders of the pelvic floor and pelvic girdle can impede optimal occupational performance with ADLs and IADLs. As part of a multidisciplinary team, occupational therapists in pelvic rehabilitation provide a conservative and holistic approach for the treatment pelvic floor and pelvic girdle dysfunctions to promote wellness, independence and quality of life.

Georgia OT Licensure Update

Rob McClellan, OTR/L, CHT; Mary Shotwell, PhD, OT/L, FAOTA

The presentation will start with introductions and roles of each individual on the licensure board. We will explain the difference between statutes and rules and provide instruction on how to access these on the website. We will discuss the revisions to the practice act, the approval process and the current status. The modalities certification process will also be reviewed. We will provide an explanation as to why the Georgia Licensure Board has this process in place. We will conclude Q & A.

Improving Self-Determination: A Strengths-Based Transition Intervention For A Youth With ASD

Teal Benevides, PhD, OTR/L

The purpose of this presentation is to 1) describe the results of a strengths-based intervention for transition-age youth with ASD aimed at improving self-determination, 2) identify actions that parents and practitioners can take to address self-determination for youth with ASD.

Comprehensive Behavioral Intervention For Tics: An Emerging Practice Area For Occupational Therapy

Debi Hinerfeld, PhD, OTR/L, FAOTA

Comprehensive Behavioral Interventions for Tics (CBIT) is a cognitive behavioral approach that can be used by occupational therapists in treating individuals who experience a disruption in their daily routines and occupational performance due to motor/vocal tics. CBIT is an evidence-based and functional approach to the management of tics through self-awareness, habit reversal, relaxation training, and modifications to daily routines, tasks and environments. By venturing into this emerging practice area, occupational therapists can fill a gap in order to serve the needs of this population, particularly in the state of Georgia.

Session 12: 11:00 am – 12:00 pm

Skilled Maintenance: Regulation And Patient Advocacy

Jackie Maynor, OTR/L; Tamera Paulk, OTR/L; Angela Edney, MSA, OTR/L

Achievement of long-term goals is often seen as the end of skilled OT services for Medicare patients. However, there are times when maintenance of function is so inherently complex that continued skilled care is required. This session explores skilled maintenance and includes actual patient samples.

The Emerging Practice Niche: Exploring Your Entrepreneurial Itch In Occupational Therapy

Kay Richardson, OTA/L, C.E.A.S

This seminar is designed for the occupational therapist interested in establishing an emerging practice and entrepreneurship. It is designed for those who are interested in developing a plan to enter into an emerging practice area to identify a niche and how to promote the practice. Kay Richardson has been an entrepreneurial occupational therapy assistant with fifteen years of experience. Her main focus is promoting entrepreneurship in occupational therapy and in healthcare.

Occupational Therapy & Bathroom Transfer Technologies. What Is Our Role And Where Should We Go?

Susan Lee, MS, OTR/L; Evan Fowler, MIDS; Jon Sanford, MArch

From grab bars to Hoyer lifts, OTs have long been involved in assistive technology provision to reduce difficulty with toilet transfers for people with disabilities. However, many solutions are abandoned, in large part due to poor aesthetic fit with the home environment and failure to satisfactorily resolve user needs. There is a need for further research and development for alternatives that will accommodate a wider range of needs of people with disabilities and their caregivers for toilet transfers. This session will highlight recent advances in research and development at Georgia Tech on improving toilet transfer technologies. We will also discuss opportunities for Georgia OTs to become partners in the product/technology innovation initiatives at Georgia Tech, as OTs client-centered approach and deep understanding of everyday function are a critical component of successful innovation efforts.

A Best Practice Model In A Hospital System-Development, Practice, And Implementation Using An Oncology Framework

Cheri Romero, OT/L

This presentation outlines the development of a best practice model in the area of rehabilitation oncology that can be applied to any specialty practice area. Developed by Northside Hospital, the objective of this model is to provide best practice guidelines for clinicians over the continuum of care, so that we can best meet the needs of this population. There are 4 practice component areas in this model: Clinical Guidelines (research and development), Logistics (goals, metrics, and outcome measures), Education (rehab staff, interdisciplinary care, physicians), and Survivorship/Community Support. Lecture will include identification of a clinical care model, identification of appropriate outcome measures, development of an electronic outcomes database, education programming, and community outreach. This presentation is primarily focused on program development in any rehabilitation area, but will use oncology practice examples during the presentation.